

CSR IMPACT ASSESSMENT FY 2022-23



SONA COMSTAR

Conducted By



InGovern Research
Services Pvt Ltd



BlueSky Sustainable
Business LLP

April 2023

Date: 26th April 2023

Certificate reference number: IB067-2200-01-00009

Service Contract Number: BSSB-2200-00009

Based on the Inspection Visit: 24th, 28th March,
10th, 12th, 18th April 2023

| | |
|--|-----------|
| Section 1: Executive Summary | 3 |
| Section 2: Background | 7 |
| About Sona Comstar | 7 |
| Sona Comstar CSR Policy..... | 7 |
| Sona Comstar CSR Programs for Impact Assessment FY2022-23 | 8 |
| Scope of CSR Impact Assessment Exercise | 8 |
| Sampling for Stakeholder Feedback & Engagement..... | 9 |
| Rating of CSR Programs | 9 |
| Section 2. Impact Assessment Methodology..... | 10 |
| BlueSky Accredited Quality Process..... | 10 |
| Social Impact Definition | 11 |
| InGovern Research Services..... | 11 |
| BlueSky Sustainable Business LLP | 11 |
| Section 3: Key Findings | 12 |
| Project 1: Sona Comstar IIT Delhi Innovation in Mobility Program | 12 |
| CSR Project Objectives | 12 |
| Activities provided to startups under the Program: | 13 |
| Project 2: Centre for Innovation Incubation and Entrepreneurship at the IIMA..... | 15 |
| Project Objectives | 15 |
| Activities provided to startups under the program: | 15 |
| Project 3: Sona Comstar-Saksham Bharat: Government Schools in Tamilnadu | 16 |
| Activities and Outputs..... | 18 |
| Stakeholder Feedback | 18 |
| Project 4: Senior Secondary School, Narsingpur Gurgaon | 19 |
| Activities and Outputs..... | 20 |
| Stakeholder Quotes | 21 |
| Project 5: Sona Comstar Scholarship Ashoka University | 22 |
| Activities & Outputs | 23 |
| Stakeholder Feedback | 23 |

Section 1: Executive Summary

This is a report on the Independent CSR Impact Assessment Report of the CSR activities undertaken by Sona Comstar in FY2022-23.

The CSR Impact Assessment exercise is based on the guidelines provided in:

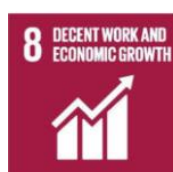
1. The Companies Act 2013 Schedule VII, Sec 135
2. Bureau of Indian Standards (BIS) IS/ISO 26000:2010 Guidance on Social Responsibility
3. UN Sustainable Development Goals

Sona Comstar CSR interventions consist of six pillars aimed at strengthening and reinforcing the nation and society. The company has a well-defined and robust governance structure to oversee the implementation of the CSR policy outlined by the Board of Directors and monitor CSR projects as per the requirements of Section 135 of The Companies Act-2013.

The Sona Comstar CSR projects for FY2022-23 are assessed under 2 thematic areas.

| Thematic Area | Schedule 7 list | Name of Beneficiary |
|---|--|--|
| Sona Comstar-Samridh Bharat: This Program focuses on creating an enduring prosperity through environmental sustainability, ecological balance, and conservation of natural resources. Support projects to promote innovations, incubations and collaborate and contribute to programs launched by universities and institutions of eminence to promote innovation driven startups in technology | (ix) (a) Contribution to incubators or research and development projects in the field of science, technology, engineering and medicine, funded by Central Government or State Government or Public Sector Undertaking or any agency of the Central Government or State Government; and | I. Sona -Comstar IIT Delhi Innovation in Mobility Program Foundation for Innovation and Technology Transfer (FITT) II. Centre for Innovation Incubation and Entrepreneurship (CIE Initiatives-IIMA) |
| Sona Comstar-Saksham Bharat: This Program shall focus on measures like providing employability and promotion of skill development programs for the rural youth in numerous modules; empowering woman through self-help groups and promotion of livelihood and employment opportunities; promoting education, employment enhancing vocational skills especially among children, women, elderly, and the differently abled and livelihood enhancement; promote gender equality, empowering women, setting up homes and hostels for women and orphans etc. | (ii) promoting education, including special education and employment enhancing vocation skills especially among children, women, elderly, and the differently abled and livelihood enhancement projects; | III. Govt. School in Tamil Nadu Construction/renovation and maintenance of basic infrastructure IV. Govt. School in Gurgaon Renovation of classrooms, Installation of Digital Smart Classes and renovation of water cooler room and installation of water purifier V. Sona Comstar Scholarship Ashoka University |

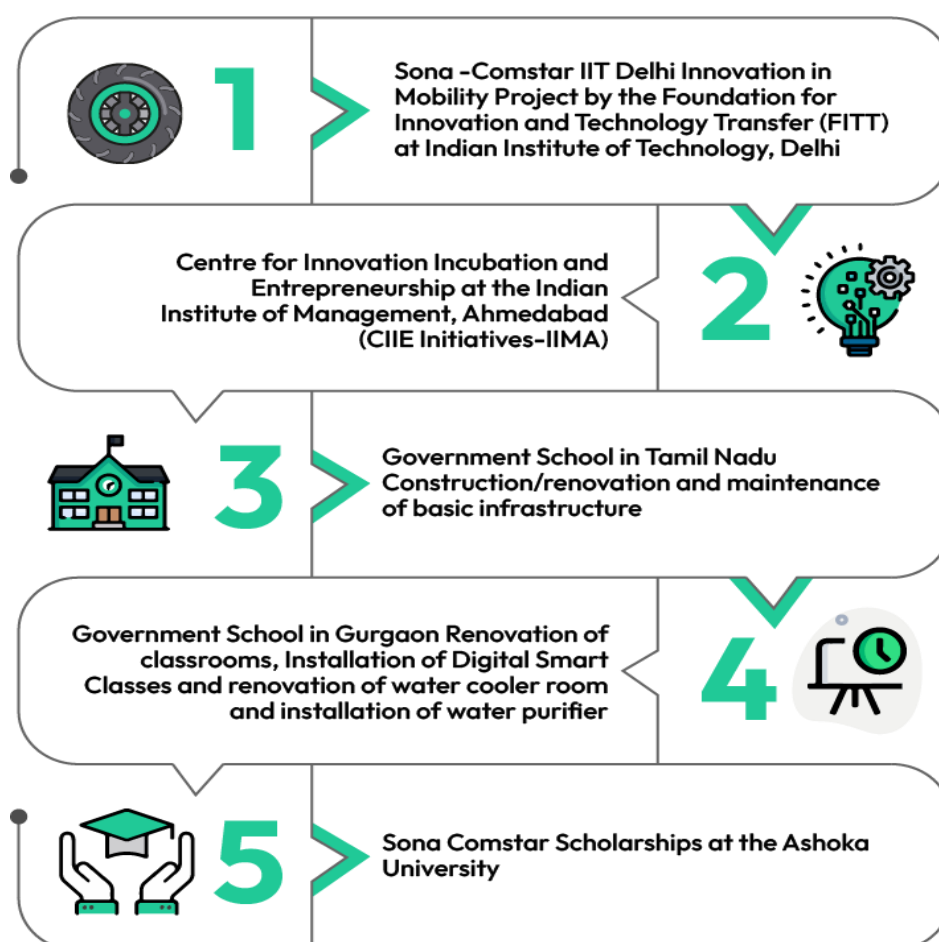
The CSR projects also contributes to the following UN Sustainable Development Goals:



| | |
|-----------------|---|
| Goal 1: | End poverty in all its forms everywhere |
| Goal 8: | Promote sustained, inclusive, and sustainable economic growth, full and productive employment and decent work for all |
| Goal 13: | Take urgent action to combat climate change and its impacts |

Sona Comstar CSR Programs for Impact Assessment FY2022-23

The five programs considered for the CSR Impact Assessment exercise are:



Impact and Relevance of Programs Sona Comstar-Samridh Bharat

- Creating a nation of job-creators and not just jobseekers is important for sustainable growth. And central to this is the need for extensive collaboration between corporate industry, academia, and governments at the village, district, state, and central levels.
- By contributing to incubators in central universities, Sona Comstar is investing in the future of the nation by supporting the development of new ideas, technologies, and businesses.
- The Sona Comstar Samridh Bharat initiative has supported five startups working in the mobility space. The Project has generated lots of interest in the EV space, leading to more collaboration and partnerships contributing to more success in the mobility startup space.
- The projects' efficiency & effectiveness is moderate, with some scope of improvement in improving the timelines required for implementation. Covid-related delays have resulted in some lags in implementation of the projects.

Impact and Relevance of Programs Sona Comstar-Saksham Bharat

- The Sona Comstar school projects are highly relevant. The provision of water, sanitation (toilet blocks) and hygiene facilities in schools by Sona Comstar secures a healthy school environment and protects children from illness and exclusion. It is a first step towards a healthy physical learning environment, benefiting both learning and health.
- When schools have appropriate, gender-separated facilities, an obstacle to attendance is removed. Girls are particularly vulnerable to dropping out of school, partly because many are reluctant to continue their education when toilets and washing facilities are not private, not safe, or simply not available.
- The projects' efficiency & effectiveness is high, with the spending on the requirements well planned and documented. The project activities are well researched and focused on maximizing impact.
- **4958 students** across seven schools in Tamil Nadu have been provided with segregated toilets for boys & girls, cleaning supplies, support staff for maintenance of toilets and renovation of school facilities.
- **925 school children & 32 teachers** in Govt School Gurgaon have been provided clean drinking water and digital learning aids in their schools.
- **14 girl scholars** studying STEM education in Ashoka University have been provided scholarship securing their education for the next 3 years.

Best Practices

- All the five projects supported by Sona Comstar in FY2022-23 are ongoing- i.e they are operational for 1+3 years as per The Companies Act 2013. This long-term investment demonstrates a commitment for investing in deep lasting social & environmental change.

- Sona Comstar leadership's mentoring of startups was very appreciated by the startups. It gave the startups insight on the skills required for commercialisation and success of innovative ideas.
- Focussing on Water & Sanitation in schools – especially middle schools is strategic and well thought out. Only when the children stabilise in the middle school will they pursue further studies. This is especially true for girl students.
- Incentivising girl students with scholarship to take up STEM education in Ashoka University contributes to gender support for STEM education.

Recommendations

- Good planning in selecting CSR programs and beneficiaries is evidenced in the Sona Comstar CSR projects. With progressive increase in the CSR funds in the coming years it is recommended to institutionalise the process of selecting implementing partners and beneficiaries by developing robust SOPs related to the CSR Functions. Spread out investments and funding on a Quarterly basis. Also, engage with stakeholders on a quarterly basis.
- While the school programs are very impactful, efficient, and effective – it is recommended that the objectives of these initiatives be aligned with National programs. E.g., the school programs can be aligned to Swachh Bharat: Swachh Vidyalaya and the impact metrics of the project can be aligned to contribute to national development indicators.
- Delays in implementing CSR programs is to be expected in social development themes- due to the inherent risk of working in ambiguous and complex environment. It is recommended to implement quarterly reporting calendars to ensure that the delays are arrested and resolved efficiently.

Rating of CSR project

Based on the proprietary scoring algorithm, Bluesky has assessed the Sona CSR program with a Platinum category of performance of CSR Activity

The Platinum Category of the CSR Project performance demonstrates.

- Sustainability Commitment,
- Leadership Visionary on Social Responsibility,
- Stakeholder Partnership and Multi – organizational Alliances

In conclusion, Sona Comstar's CSR interventions and projects have a significant impact on society and the environment, and their contribution aligns with the Companies Act 2013, Schedule VII, Sec 135, and the UN Sustainable Development Goals. The overall purpose of the CSR Impact Assessment is for Sona Comstar to assess the benefits of its CSR efforts, strive to maximize the impact of its CSR programs, and identify areas for further engagement with the community.

Signed by

InGovern and BlueSky

Date: 26th April 2023

Section 2: Background

CSR Impact Assessment is a process which is individual to the company and depends on factors such as the size of the company and its maturity in addressing the expectations of the community it operates in.

The purpose of the CSR Impact Assessment Report is for Sona Comstar to assess the impact of the activities of their CSR efforts, strive to maximize the impact of their CSR efforts and to identify areas for improvement and further engagement with the community.

About Sona Comstar

Sona Comstar is a leading global manufacturer of automotive powertrain systems and components. With over three decades of experience in the industry, Sona Comstar has established itself as a trusted and reliable partner for some of the world's leading automakers.

The company offers a wide range of products and services, including electric and hybrid powertrain solutions, transmission components, and precision forging and machining services. Their products are designed to meet the evolving needs of the automotive industry, which is rapidly transitioning towards electrification and sustainability.

Sona Comstar operates from multiple state-of-the-art manufacturing facilities located in India, Mexico, and the United States, with a combined production capacity of over 8 million units per year. The company's commitment to quality and innovation is reflected in its certifications, including ISO 9001, ISO 14001, and IATF 16949.

In addition to its core business of automotive powertrain systems, Sona Comstar is also involved in the development of next-generation technologies such as autonomous driving and connected vehicles. The company has a dedicated team of engineers and researchers who are working on cutting-edge solutions that will shape the future of mobility.

Sona Comstar CSR Policy

Sona Comstar's CSR interventions consist of Six pillars aimed to strengthen and reinforce the nation and the society:

- (I) Samridh Bharat
- (II) Swasth Bharat
- (III) Surakshit Bharat
- (IV) Saksham Bharat
- (V) Swachh Bharat
- (VI) Stree Shakti Bharat

In addition, all other areas/activities as may be prescribed under Schedule VII of the Act or the Rules, as amended from time to time.

Sona Comstar has a well-defined and robust governance structure to oversee the implementation of the CSR Policy and monitoring of CSR projects as per the requirements of Section 135 of The Companies Act-2013

<https://sonaComstar.com/files/documents/corporate-social-responsibility-policy-document-pOSeId.pdf>

The 5 programs assessed for FY 22-23 contribute to the following 2 thematic pillars.

Theme 1: Sona Comstar Samridh Bharat

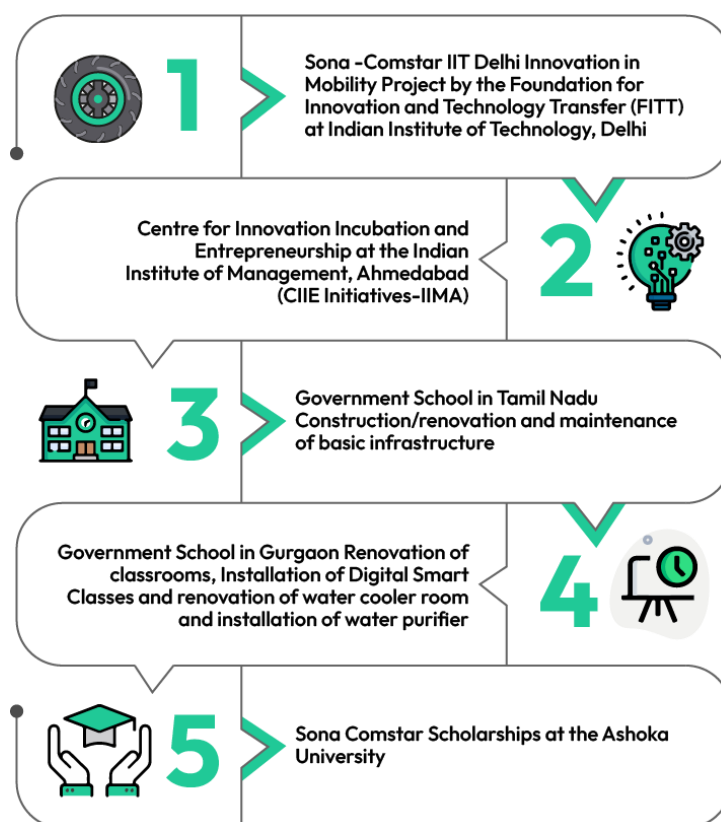
This Project focuses on creating an enduring prosperity through environmental sustainability, ecological balance, and conservation of natural resources. Support projects to promote innovations, incubations and collaborate and contribute to programs launched by universities and institutions of eminence to promote innovation driven startups in technology.

Theme 2: Sona Comstar Saksham Bharat

This Project shall focus on measures like providing employability and promotion of skill development programs for the rural youth in numerous modules; empowering woman through self-help groups and promotion of livelihood and employment opportunities; promoting education, employment enhancing vocational skills especially among children, women, elderly, and the differently abled and livelihood enhancement; promote gender equality, empowering women, setting up homes and hostels for women and orphans etc.

Sona Comstar CSR Programs for Impact Assessment FY2022-23

The five programs considered for the CSR Impact Assessment exercise are:



Scope of CSR Impact Assessment Exercise

- To assess the CSR Project for the relevance, impact, sustainability, efficiency, and effectiveness.
- To assess the CSR Projects performance as per the pre-defined targets defined in the MoU signed with Implementing Agency
- To assess if the objectives of the projects have been met.

Sampling for Stakeholder Feedback & Engagement

1. 10 Key Informant interviews
2. 8 Focus Group Discussions

Rating of CSR Programs

Based on the proprietary scoring algorithm, BlueSky has assessed the Sona CSR Project with a Platinum category of performance of CSR Activity. The Platinum Category of the CSR Project performance demonstrates:

- Sustainability Commitment
- Leadership Visionary on Social Responsibility
- Stakeholder Partnerships and Multi-organizational Alliances

Section 2. Impact Assessment Methodology

BlueSky Accredited Quality Process



The analysis and findings of this report is based on the following process:

- Desk review of the existing data of the project being implemented. - Planning & Implementation of the program, its monitoring processes of recognizing social responsibility (why the project), identifying key stakeholders and beneficiaries (who of the project)
- Stakeholder feedback from key stakeholders of the project – Beneficiaries of Implementing partners, Representatives of Implementing partners, CSR Team etc. Qualitative feedback and Quantitative metrics have been collected through interactions and feedback from the key stakeholders and beneficiaries of the program.
- Documentary evidence on the activities, outputs and outcomes is as provided by the client.

The data so collected is triangulated to arrive at the impact of the CSR program.

Social Impact Definition

Outputs: are the Project activities we do or accomplish that help achieve outcomes.

Outcomes: are the short-term results, the delta difference brought about because of those activities for individuals, families, groups, or communities.

Impact: is the long-term results of the same outputs, examines the significance of the intervention and its higher-level results, meaning how much it mattered to those involved.

Relevance: The extent to which the Project Objectives and design respond to beneficiaries. The relevance is context specific to the geography or culture in which the intervention is being implemented.

Effectiveness: The extent to which an intervention is achieving or has achieved its objectives. This includes whether an intervention has attained its planned results, the process by which this was done, which factors were decisive in this process and whether there were any unintended effects.

Efficiency: The extent to which the project activities deliver, or is likely to deliver, results in an economic and timely way.

Sustainability: The extent to which the net benefits of the intervention continue or are likely to continue.

InGovern Research Services

InGovern is a pioneer in corporate governance advisory and shareholder activism in India. Since 2010, InGovern has advised investors and Indian companies on governance matters, including on enhancing shareholder value through better corporate governance (CG) practices. The vision and goal of InGovern is to advice and develop “purpose-led” Indian companies.

BlueSky Sustainable Business LLP

BlueSky is an Accredited Inspection Body for social service projects as per ISO/IEC 17020:2012, which specifies requirements for the competence of bodies performing inspection and for the impartiality and consistency of their inspection activities.

BlueSky is accredited by NABCB -National Accreditation Board for Certification Bodies, Quality Council of India to conduct assessments of social projects. The BlueSky impact assessment inspection methodology and the consequent Impact assessment report & certificate conforms to the guidance available in:

- The Companies Act 2013 Schd VII, Sec 135 and its amendments.
- Bureau of Indian Standards (BIS) IS/ISO 26000:2010 Guidance on Social Responsibility
- UN Sustainable Development goals

Section 3: Key Findings

THEME 1: Samridh Bharat

Project 1: Sona Comstar IIT Delhi Innovation in Mobility Project

Foundation for Innovation and Technology Transfer (FITT), a society registered under the Societies Registration Act 1860, has its office at Hauz Khas, New Delhi and operates the Technology Business Incubation Unit (TBIU) on IIT Delhi campus. TBIU has been instrumental in converting novel technological concepts and ideas into commercially viable opportunities. The IIT Delhi incubator Project is inclusive and open to people outside of the IIT system.

Project Duration: Ongoing Project of 4 years duration: FY2020-21 to FY2023-24

In FY 2022-23, FITT has initiated the process of identifying the startups to support. They have received 28 applications and are in the process of identifying the beneficiary startups for FY2022-23.

FITT's performance in identifying startups in the previous years is tabled below:

| | Year | Eligible Candidates | Initial Shortlisting | Final Selected |
|---|-----------|---------------------|----------------------|------------------|
| 1st year of application | FY2020-21 | 23 | 5 | 2 |
| 2nd year | FY2021-22 | 18 | 7 | 2 |
| 3rd year | FY2022-23 | 28 | Work in progress | Work in progress |


CSR Project Objectives

- To provide requisite physical infrastructure to incubators
- Funding support to take ideas to proof of concept/ product prototyping and IP stage to 2 startups per year.
- Mentoring support from IIT Delhi faculty and experts
- Mentoring support from Sona Comstar Leadership
- Create opportunities whereby Incubator(s) can engage with venture capitalists and industry to take innovations into commercialization.

Activities provided to startups under the Program:



Financial support up to ₹ 80 Lakhs is provided as a grant in aid in 3 or 4 tranches as per the progress made under predetermined milestones decided based on the project's objectives.



The incubation, mentorship and networking opportunities are offered for approximately 6 months even after the completion of this incubation period.

Details of selected startups in FY2020-21

1. Quanteon Powertrain Private Limited

| | |
|--------------------------|---|
| Project Title | Axial Flux Motor Powered E-Axle "Sudarshan Chakra" |
| Product Details | The project aims to develop an E-Axle powered by Axial flux motor. The developed solution will be designed to be compact in length and uses an ingenious arrangement for siting. The initial study and simulations developed by the start-up proves that the E-axle will be more efficient than the existing solutions and generate much higher torque in the deployable speed range. |
| Expected Outcomes | With the support grant provided under SCIDIP, the final expected outcomes of the projects are: <ul style="list-style-type: none"> a. Proof of concept a unique efficient E-Axle design b. Establishing a new line of product design for EVs |

2. inGO Electric Private Limited

| | |
|--------------------------|---|
| Project Title | Variator coupled drive train with Magnet-free motor for high performance 2w EV |
| Product Details | The project targets development of an Indigenous high performance, and cost-effective electric conversion kit for Two Wheelers. The developed drivetrain for scooters will be an enabler for retro fitment of ICE scooters & also targets to supply to other OEMs for new scooters. |
| Expected Outcomes | With the support grant provided under SCIDIP, the final expected outcomes of the projects are: <ul style="list-style-type: none"> a. Drivetrain Development and Functional Testing with redesigned CVT clutch b. Performance Validation by retro fitment c. Certifications for the developed kit |

Details of selected startups in FY2021-22

1. Creatara Mobility

| | |
|------------------------|---|
| Project Title | Modular Vehicle Platform and Motor and rear suspension mounting system |
| Product Details | <p>It is proprietary mounting system that enables fixed distance between the output shaft of mid mounted motor and the rear wheel axis.</p> <p>Battery pack design & battery pack mounting system: Proprietary removable battery pack design that is multi-functional with in-depth ergonomic considerations. The battery pack is designed to dock and un-dock easily and minimal effort to carry for charging from the nearest power outlet.</p> |

2. P3C Technologies:

| | |
|--------------------------|--|
| Project Title | Perovskite solar cell |
| Product Details | <p>Perovskite solar cell is a solution-processed thin film solar cell that can directly deposit on various substrates like glass, metal and plastic. Therefore, the PSC has potential to make whole car self-powered. Since it is a solution processed technology, it can be deposited on every metallic and plastic part of car. Again, if we talk about the numbers, PSC can generate 500W in 2 meter² in 1 hour span. We have already been depositing 2 layers present in PSC using our indigenous technology.</p> |
| Expected Outcomes | <p>Objectives achieved till date:</p> <ol style="list-style-type: none"> Electron transport layer on glass and metal Perovskite layer on glass and metal ETL/Perovskite layer on metal of dimension 166cm² Transparent conductive oxide in glass Electron transport layer on glass TCO/ETL/Perovskite layer on glass substrates of dimension 100 cm² |

Quote from FITT Spokesperson

- The biggest challenge the startups face is the speed of commercialisation. When Sona Comstar leadership, who are experienced in running profitable companies, mentor the start-ups, it gives good insight in commercialisation of the startup ideas.*
- All startups do not succeed and hence financial and other support from donors like Sona Comstar is critical for the startup eco system to thrive.*

Quote from Founder of startup

- With the guidance available to us in the Sona Comstar IIT Delhi Innovation in Mobility Project, Our product has developed to become very attractive to investors as it has impact on environment and society. There is a huge interest in our startup by businesses as it reduces carbon emission.*
- The mentoring provided by FITT was extremely important but if it is extended a little longer it will be very useful. Being a startup – some ideas take a little longer to stabilise.*

Project 2 : Centre for Innovation Incubation and Entrepreneurship at the IIMA

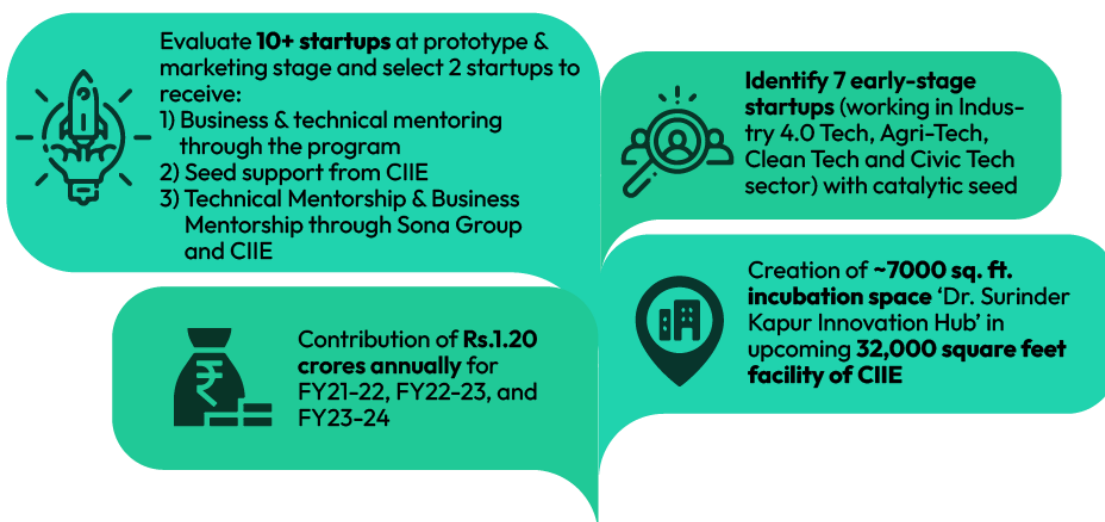
Set up at IIM Ahmedabad as a Centre of Excellence with support from the Government of India's Department of Science and Technology and Government of Gujarat, CIIE is the epicentre of The Innovation Continuum. It was established in 2002 as an entrepreneurship centre at IIM Ahmedabad. In 2007-08, CIIE launched and incorporated the technology business incubator. Over the years it diversified into entrepreneurship research and publications, accelerators, venture funds, learning tools and innovation partnerships.

Project Duration : Ongoing Project of 4 years duration: FY2021-22 to FY2025-26

CSR Project Objectives

- Sourcing and generation of venture activities
- Incubation of early-stage ventures
- Access to capital sources

Activities provided to startups under the program:



Catalytic seed support:

- Strategic advisory through one-on-one mentoring & guidance to early-stage startups developing innovative solutions for industry.
- Seed Support for innovative startups

Details of selected startups in FY2022-23

- In this program, till date, one startup has been identified. The First tranche of payment received in June 2022, second tranche received by March 2023 and the third tranche received by March 2023.
- Startup Renkuba has been identified as the first beneficiary. The startup is engaged in developing an AI-powered 3D glass design and Motion-free Optical Tracking Technology that increases the solar panel energy yield by 20% and reduces the cost of energy generation by 12%.

Theme 2: Saksham Bharat

Project 3: Supporting Government Schools in Tamil Nadu

Water, sanitation and hygiene in schools refers to a combination of technical and human development components that are necessary to produce a healthy school environment and to develop or support appropriate health and hygiene behaviours.

Girls are particularly vulnerable to dropping out of school, partly because many are reluctant to continue their education when toilets and washing facilities are not private, not safe, or simply not available. When schools have appropriate, gender-separated facilities, an obstacle to attendance is removed. Thus, having gender segregated toilets in schools particularly matters for girls.

Sona Comstar has been supporting schools in Tamil Nādu on water, sanitation and hygiene since 2015. It identifies a few schools every year and continues to support these schools over the years.





| Sl. No. | School Name | Location | No of Boys | No of Girls | Total students | Served from | No of Restroom buildings | Restroom Area in Sq.ft /each |
|---------|--|---------------------------------|------------|-------------|----------------|-------------|--------------------------|------------------------------|
| 1 | Government Higher Secondary School | MM Nagar, Chengalpattu Dist. | 420 | 291 | 711 | 2015 | 2 | 401 |
| 2 | Government Higher Secondary School | Vandalur, Chengalpattu Dist. | 390 | 380 | 770 | 2016 | 2 | 401 |
| 3 | Government Higher Secondary School | Nellikuppam, Chengalpattu Dist. | 353 | 328 | 681 | 2017 | 2 | 565 |
| 4 | Government Higher Secondary School | SP Kovil, Chengalpattu Dist. | 340 | 310 | 650 | 2018 | 2 | 565 |
| 5 | Government Girls Higher Secondary School | Padappai, Kanchepuram Dist. | 0 | 1100 | 1100 | 2020 | 2 | 565 |
| 6 | Government Higher Secondary school | Manampathy, Chengalpattu Dist. | 360 | 179 | 539 | 2021 | 2 | 602 |
| 7 | Government Higher Secondary School | Chunambedu, Chengalpattu Dist. | 267 | 240 | 507 | 2022 | 2 | 602 |

Government School in Tamilnadu, Chunambedu

- Chunamabedu High School is a co-educational school located in Chengalpattu District of Tamilnadu. 500 students from grade VI to XII attend the school.
- The school campus has a large campus and is situated on the main road. It has wild forest growth in the back of the school.

Activities and Outputs in FY 2022-23



7 schools in Tamilnadu, with 4958 students are supported by providing consumables and **2 cleaning staff** to maintain the clean toilets built by Sona Comstar since 2015.



School 7 Chunambedu - construction of restroom project for girls 8 cubicles for girls and renovation of one classroom & one library (included painting work and tiles work)



School-1-Maraimalainagar school-tiling and plumbing work carried at 6 number of restroom cubicles for boys. Closet renovation, restroom painting, sanitation board fixing at 8 no. of restroom cubicles for girls.support.

Stakeholder Feedback

Stakeholder Feedback on Impact of Bathrooms from Boy students

- *The new toilets are clean. We wash hands as there is good water facility.*
- *The earlier toilets were not good, and we used to urinate outside in open place outside the school. It was embarrassing as the passersby in the bus stand could see us. There was stinking smell always in the old bathrooms as there was no running water.*

Stakeholder Feedback on Impact of Bathrooms from Girl students

- *We are using the new bathrooms frequently as water is sufficient and cleanliness is good.*
- *The toilets are near to classrooms so it easily accessible unlike the old ones which was at the end of the compound.*
- *Changing of pads is now possible in the toilets and because of that, we do not skip the menstrual days (three to four days).*
- *We are asking our parents to construct toilets in the house also and we are also educating the parents on usage of toilets. Hygiene practices, like washing hands after defecation or urination, change of sanitary napkins regularly has improved and we are happy to have such toilets.*

Stakeholder Feedback on Impact of Bathrooms from Teachers

- *"We have to agree that because of toilets, girl student attendance has increased" and parents are happy to see the girl students are regular to school.*
- *"Earlier, boys would go outside the school campus to urinate and not come back for few classes. But now with the toilets inside the school compound we see better attendance in classes.*

Stakeholder Feedback on Impact of renovation of Library & Computer room

- *The renovated library and computer room attracts more students to visit it. The recent circular from the Government that the schools should have one hour as reading period in the library has an added advantage for the students.*
- *The relevant subjects are taught in the computer, visually, particularly the science, maths etc., and that brings significant changes in the academic performance. The utilization of computer room has increased a lot due to the renovation.*



Case Study

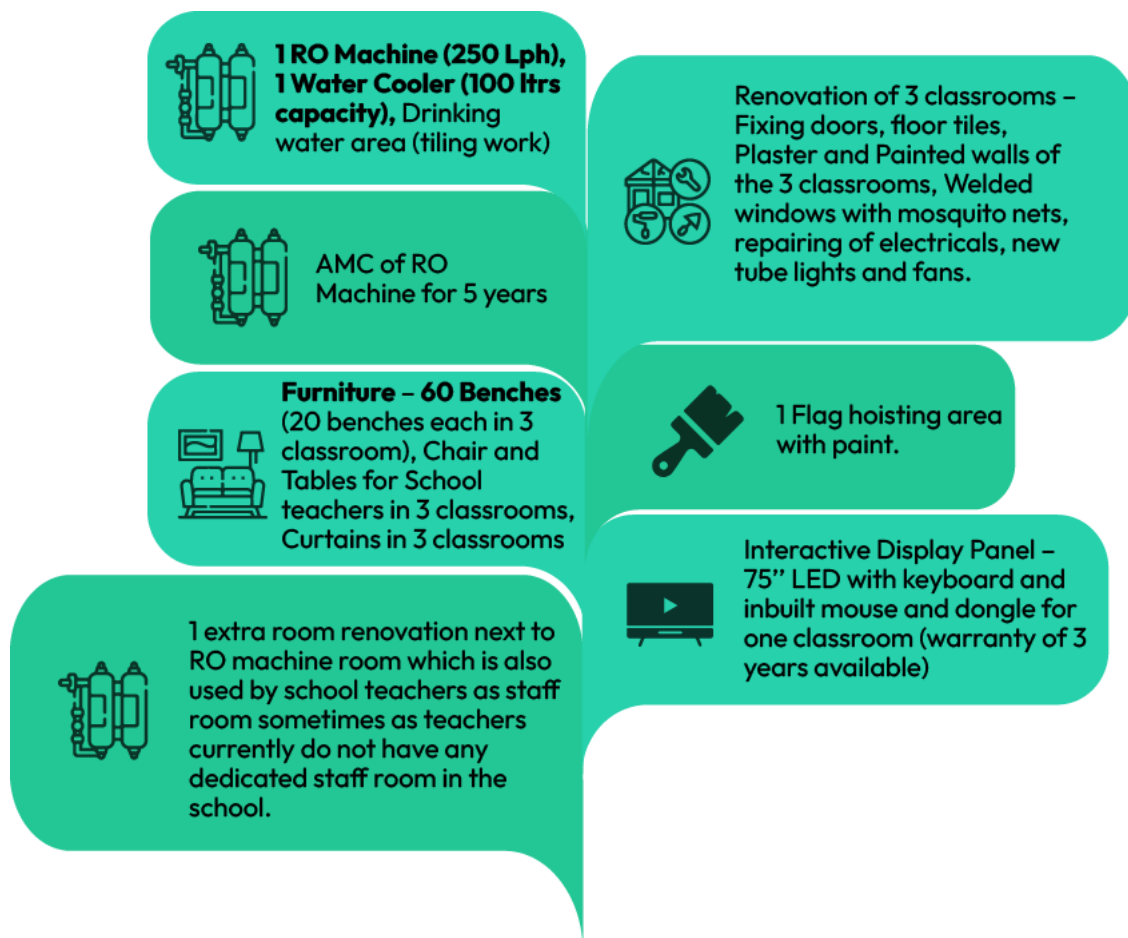
Bhargavi, 10th class student, regularly visits the library and refers to the history books. She explained the story of “chozha” kingdom in the prayer, time and has also won a prize at an inter school competition. The story telling was excellent and it is the best example that a student utilized the library. She got the talent of storytelling and teachers are encouraging the girl in providing more books. The knowledge levels of the students have improved and there is a increase in the students visiting the library.

Project 4: Senior Secondary School, Narsingpur Gurgaon

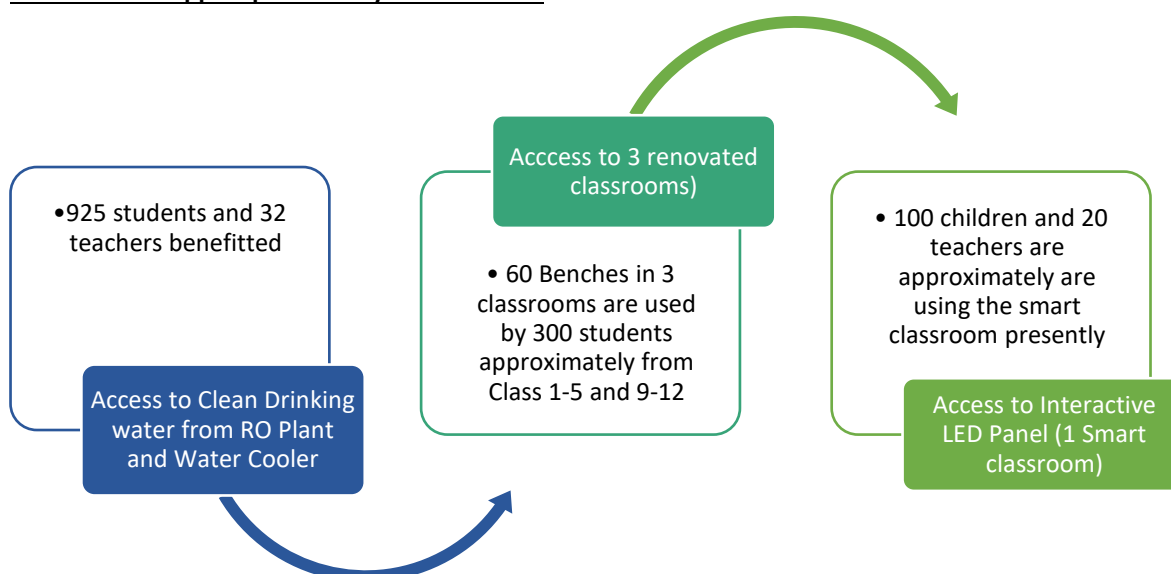
- The school (School Code 4341) has a total of 925 students from Grade 1st to 12th, which is coeducation and 32 schoolteachers.
- The children in the school come from nearby areas and belong from underprivileged background. Parents of the children are daily wage workers, contractual workers etc.
- The school was earlier dependent on nearby sources for drinking & sanitation water. The TDS level of water was very high which was not safe for drinking. Children would bring their own bottles to the school for drinking water and had to rely on the same bottle till the end of their day. This also led to children drinking less water in the school.
- The school also faced challenges in 3 classrooms like poor sitting arrangements for students, lack of benches and desks, poor windows, no fans, no chairs and table for teachers, no smart classrooms etc.
- The 3 classrooms were underutilized and used as storerooms. Children would have to sit outside their classrooms in the corridor on the ground for studying.



Activities and Outputs



Utilization of support provided by Sona Comstar



Key Outputs

- Installation of RO Plant and water cooler has provided better access to drinking water for all the **925 school children and 32 schoolteachers**. There is even cold-water during summer season.
- Post renovation of 3 classrooms, children now have access to better sitting arrangements which have enabled them to study better. Teachers also have better access to sitting arrangements for themselves to teach students efficiently.
- Teaching method changed after Interactive Display panel (LED) was installed by Sona Comstar thereby making 1 of the classrooms to be Smart Classrooms
- There has been a marked improvement in school attendance of school children after the renovation of 3 classrooms and installation of RO machine and water cooler in school. This was validated by all the stakeholders interviewed – children, teachers, principal.
- Improvement in terms of Children’s retention of classroom sessions have been observed. Post the installation of Digital boards (LED Panels), children are learning online through e-sessions wherein digital display, audio-visual method of teaching has improved their retention power.
- Post installation of Smart classroom (Interactive Panel LED) students have now gained technical knowledge on how to use internet and search materials online.
- Children now have qualified for the NMMS (National Merit Mains Scholarship) exam, a govt scholarship provided by Haryana government for class 8th – 12th students. Children in class 7th who score the best are selected and receive Rs. 1000 per month from 8th to 12th class 5 children qualified this exam this year from the school. With the renovation work done in school, now more students feel motivated to apply for such scholarship exams and other government support programs like Buniyaad.

Stakeholder Quotes

- *“Children never thought that they will have ever access to such good quality of classrooms, benches and desks, or smart TVs for learning. Since renovation they are now very happy especially with the classrooms and water facility” – School Teacher, Subodh, Science teacher.*
- *“Children learning capabilities have improved a lot with the use of smart classrooms made by Sona Comstar. The Smart classroom not only helps students but also improves teachers teaching capacity to teach students better. From science diagrams to audio-visuals of maths classes, landforms to other different geography related topics; everything we are able to cover and teach perfectly to students. Earlier this was not possible to draw so many items on the board and explain. With smart classrooms, teachers are able to utilize their time better in teaching students” – School Teacher, Punam, Geography teacher.*
- *“Few children in my classrooms have started to attend school regularly whereas earlier before the renovation of classrooms, they would be irregular to school” – Students (female group).*



Project 5: Sona Comstar Scholarship Ashoka University

- International Foundation for Research and Education (IFRE) is the parent body of Ashoka University. Ashoka is India's pioneering Liberal Arts and Sciences University.
- Ashoka University has an established track record of over ten years in undertaking projects/ Project s in the field of "education", with an emphasis on the development of 21st Century skills and leadership attributes inculcating a strong civic responsibility in their students, making them well rounded, socially conscious and responsible citizens.
- Ashoka aims to provide access to quality education to all deserving students, irrespective of their socio-economic background.
- Ashoka University is committed to making its world-class education accessible & affordable for students from all walks of life. This is made possible through their need-based Financial Aid philosophy. While admission to Ashoka University is based on academics, extra-curricular activities and other holistic principles, financial aid is assessed entirely based on the financial standing of the student's family.
- Ashoka university endeavours is to provide necessary financial support which can help admitted candidates bridge the gap between the cost of the Project and their ability to pay.
- Ashoka has approximately 33 corporate donors and 6 foundations supporting the scholarship program.

Activities & Outputs

As per the agreement between Sona Comstar and IFRE, Sona Comstar is supporting scholarship of 14 deserving and meritorious women students from economical weaker backgrounds for three years of their undergraduate Project at Ashoka University starting academic years 2022-23, 23-24 and 24-25.

Scholarship shall be provided to eligible Women Scholars pursuing Computer Science or maths as their major/minor stream of study in Ashoka University.

- 2 students would be provided full scholarship.
- 4 students 65% of the scholarship
- 8 students 50% of scholarship.

Stakeholder Feedback

Stakeholder Feedback Student 1:

- *I am currently pursuing a minor in creating writing. But studying in Ashoka has strengthened my resolve to take up Biology and contribute my writing skills for the BioSociety journal for biosciences. I am very thankful to the scholarship as it would have been impossible for me to pursue my studies in Ashoka without this help.*

Stakeholder Feedback Student 2:

- *I am currently pursuing Computer science. I have varied interests - I have published book of poems and also made an app to help old people. I am grateful to be provided the scholarship as it has given me an opportunity to pursue my varied interest which will contribute to make this world a better place.*

In conclusion, Sona Comstar's CSR interventions and projects have a significant impact on society and the environment, and their contribution aligns with the Companies Act 2013, Schedule VII, Sec 135, and the UN Sustainable Development Goals. The overall purpose of the CSR Impact Assessment is for Sona Comstar to assess the benefits of its CSR efforts, strive to maximize the impact of its CSR programs, and identify areas for further engagement with the community.
